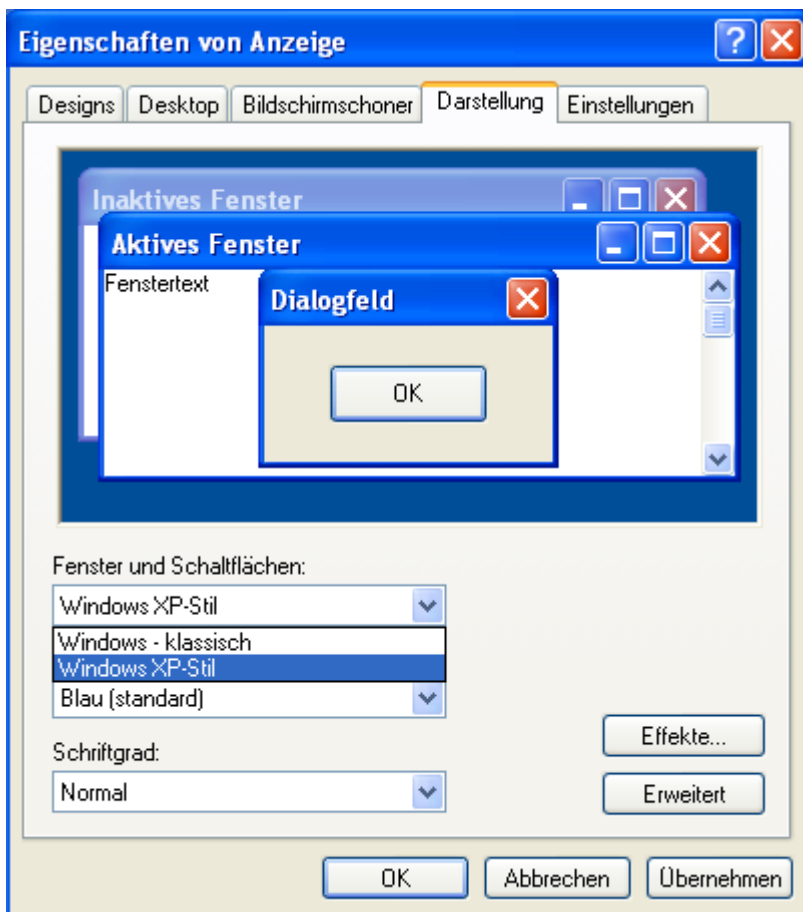

MODERN DESIGN	2
HTML OUTPUT	3
SPEED	3
WALLPAPER OF ANY SIZE POSSIBLE	3
MULTICHARTS	3
FOLDERS	3
INTEGRATED FORMULA EDITOR	4

OrgChart 2.32



Modern design

The user interface has been updated with modern elements in XP style. The new style is only visible when Windows Styles are enabled in the operating system.



OrgChart 2.32



HTML output

Speed

The speed of creating the files has been increased significantly.

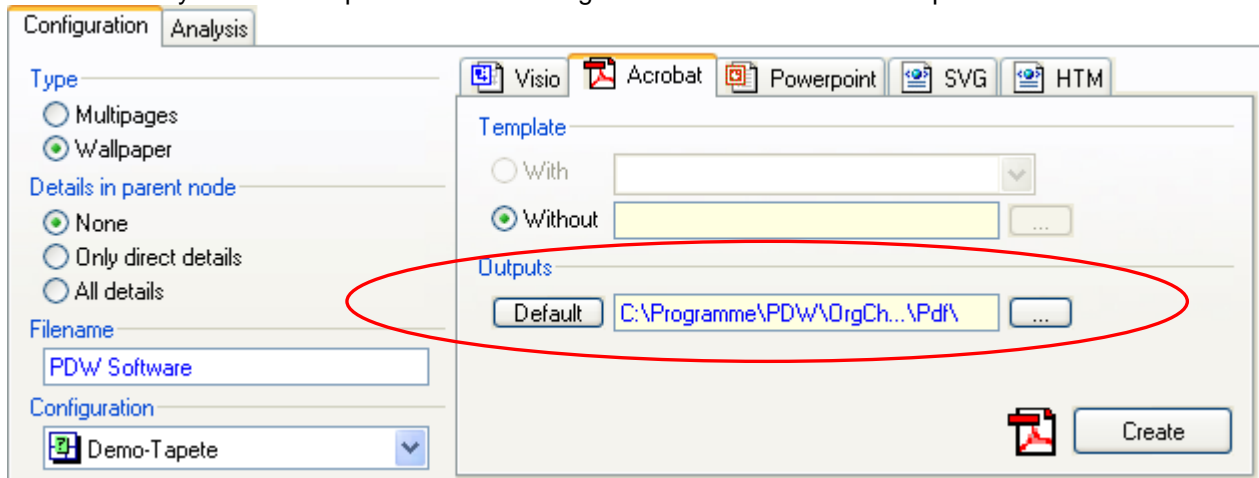
Wallpaper of any size possible

Outputs In wallpaper format for large Units could cause an error. The cause was the necessary creation of the corresponding images, which was (due to limits of the operating system) not possible for images above a certain size. In case of this problem, the necessary images are assembled out of smaller parts, thereby also less powerful computers can create organizational charts as large as needed.

Multicharts

Folders

For each node a separate output directory can be defined. The default is set in Tools-Options-Folders. These complex structures can be distributed automatically in multiple folders, in combination with different permissions a very comfortable publication of the organizational chart structure is possible.



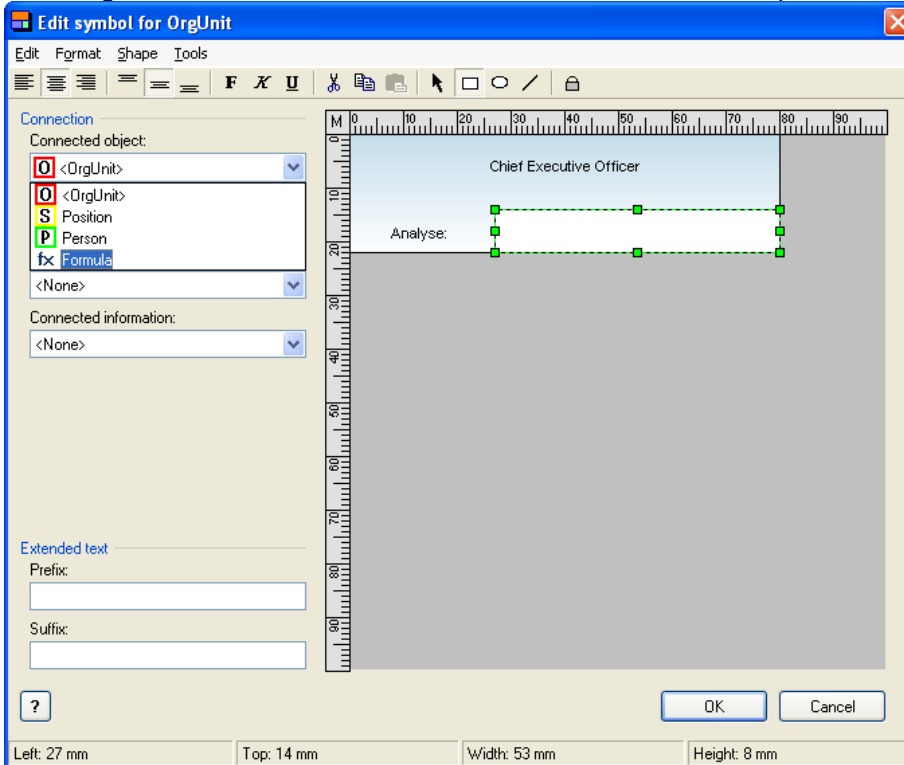
If the output directory is set for a particular node, then also all child organizational charts of the deeper nodes will be created in this output directory. This rule applies until another output directory is set for a child. Therefore the child nodes inherit the path setting of the parent node.

OrgChart 2.32

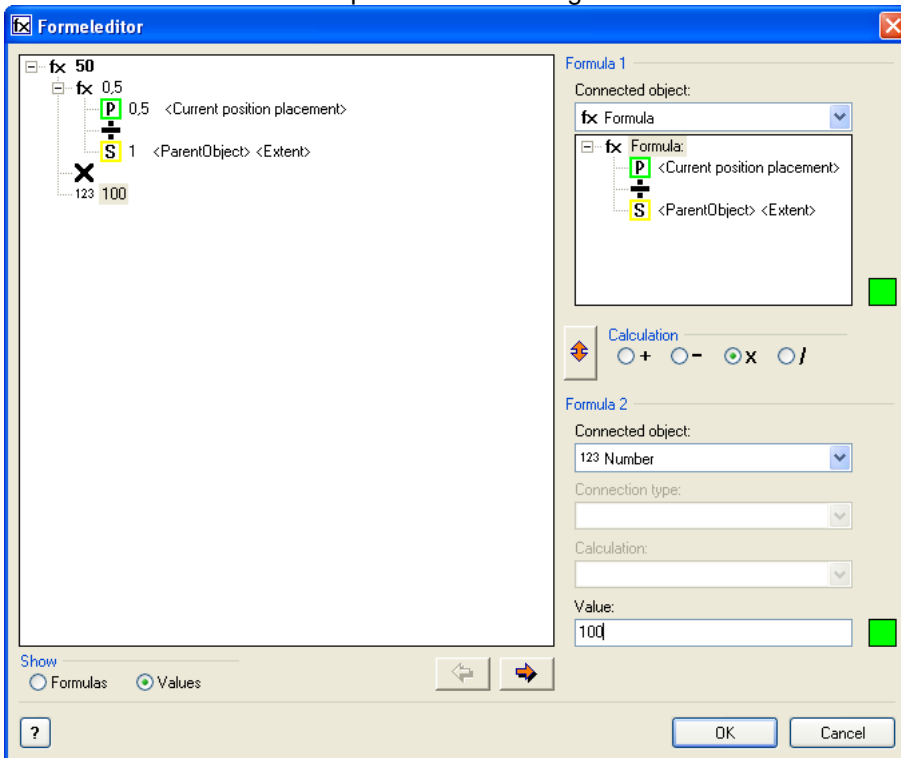


Integrated formula editor

The integrated formula editor can be used for calculations as complex as required.



The Formula Editor window opens after selecting "formula":



Detailed information on using the formula editor are in the online help.